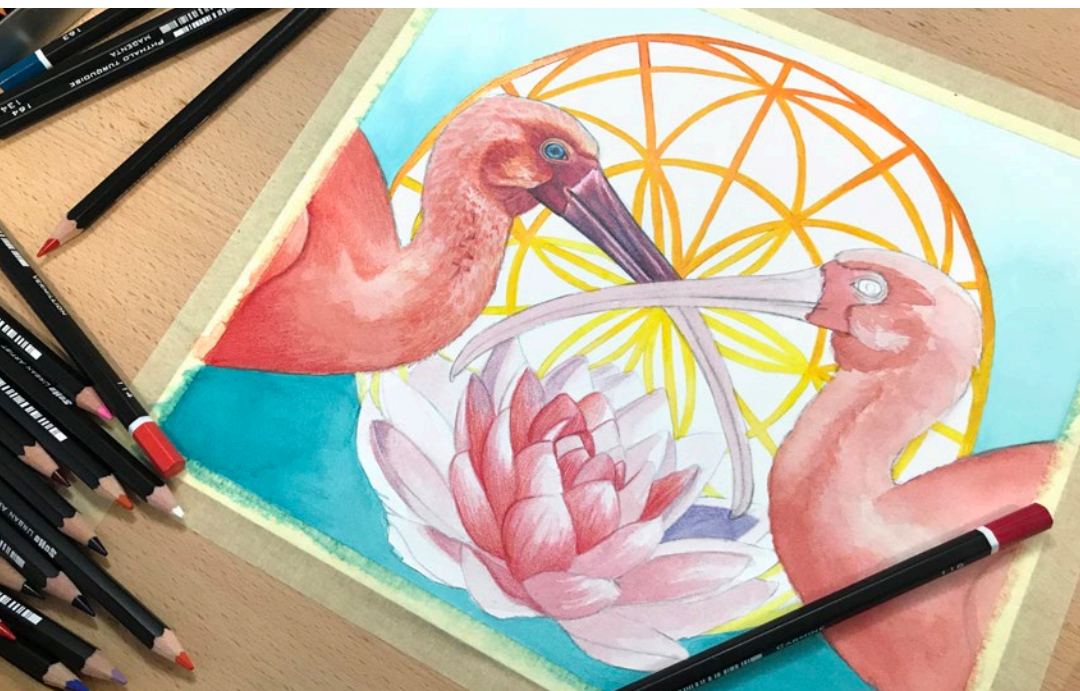


# JERRY'S ARTARAMA®

Empowering Artists Since 1968!

## *Colored Pencil with Mixed Media*



2018  
HOLIDAY  
GIFT GUIDE

## *SoHo-Ho Demo*

by Barb Sotiropoulos • [barbsotiart.com](http://barbsotiart.com)



# *Colored Pencil with Mixed Media*

## **A SoHo Urban Artist Demo by Barb Sotiropoulos**



Creating colored pencil art with mixed media yields dynamic results and can help expand the creative possibilities within your work. Having worked with multiple mediums over the course of my artistic career, it's been hard not to fall in love with the qualities and capabilities that some mediums have. So much so in fact, that I believe this is what drove me to start mixing mediums in my artwork.

In this mixed media demonstration, I'm going to take you through my process using products from the SoHo Urban Artist line available at Jerry's Artarama. If you're an artist on a budget, these products will allow you to create high-quality results without the price tag normally associated with it. From start to finish, SoHo Urban Artist has you covered!

### ***Materials List:***

#### **SoHo Urban Artist Products Used:**

- Colored Pencils
- Ebony Super Soft Graphite Pencil
- Watercolors
- Watercolor Brushes
- India Ink
- Acrylic Paint
- Palette Pad
- Adjustable Drawing Board
- Studio Wipes

#### **Other:**

- Low-tack Artists' Tape
- 140lb Hot Press Watercolor Paper
- Non-photo Blue Pencil
- Paper Towel
- Water
- Reusable Palette with Wells

**View and buy all these products on our convenient**

## **JERRY'S SOHO SUPPLY LIST**

**<http://bit.ly/soholist18>**

**or shop at [www.jerrysartarama.com](http://www.jerrysartarama.com)**

*Prices are subject to change and may be sold even lower than printed.  
Look to the Jerry's Artarama website for up-to-date pricing.*

**Create your own wishlist while you're there!**

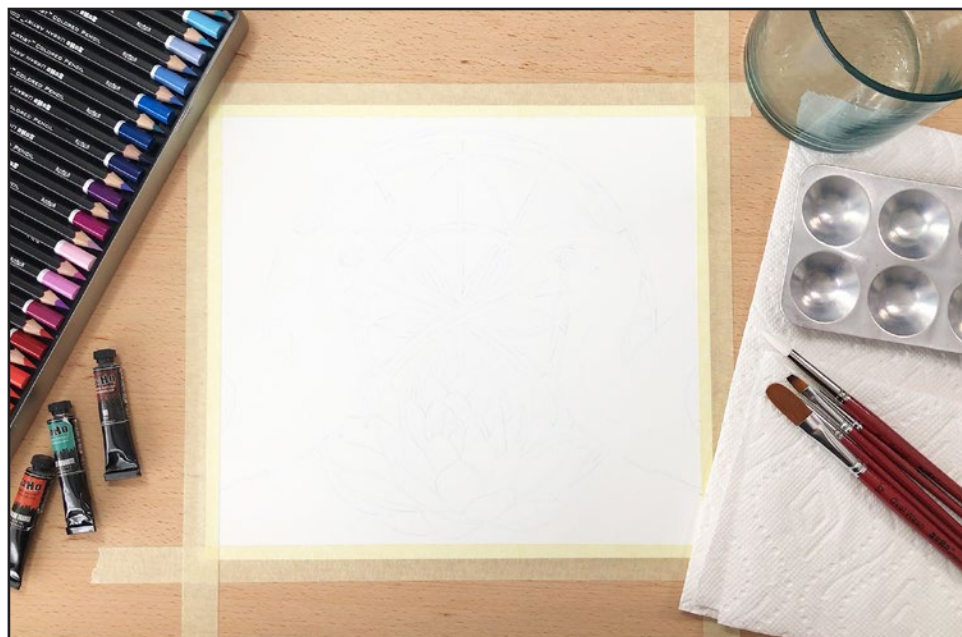


## Getting Started

I've done a light-box transfer of my illustration using a non-photo blue pencil on hot press watercolor paper. In my process, I prefer to use hot press watercolor paper because the tooth tends to be smoother, which is ideal in combination with the colored pencil layers I'll be applying later.

Using low-tack artist's tape, I then adhere it to my drawing board, covering a quarter of an inch border on all sides. By taping down my paper, it will help counteract any warping that will occur when the paper is wet, and will also leave a crisp, clean, white border when the piece is finished.

The adjustable drawing board I am using is lightweight and allows you to work in zero to 80-degree positions. Its smooth surface is paramount for creating detailed works and is great as a level tabletop, which is how I am using it here.



### Adjustable Drawing Board

This all-wood drawing board features a smooth maple colored surface that is a full 19.75 x 29.5" in size. Integrated base allows you to easily adjust working angles from flat to 80 degrees. Folds to a thin profile and weighs just 8.3lbs. The bottom edge of the SoHo Adjustable Drawing Board features a sturdy ledge that can hold art tools, small works of art, sketchbooks, paper, panels, or a thin canvas. Cat.#87469 List: \$69.95

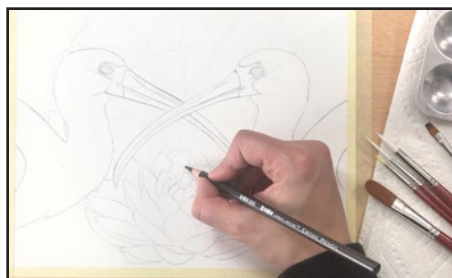
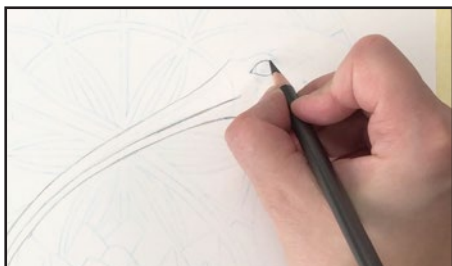
**Jerry's Price: \$45.99**



## Sketching

My next step is to sketch out some of the areas. I used the non-photo blue pencil first because I don't want pencil lines showing up in the lighter areas of the drawing.

By using the Ebony Super Soft Dark Graphite pencil in the other areas it will help keep my drawing guidelines intact for when I start blocking in color with the watercolor paint. This pencil allows you to create a variety of tones by varying the pressure that you apply. In this case, I'm applying a light pencil sketch, but if I wanted to create darker and more defined pencil lines, I wouldn't need to switch pencils to do so.



## SoHo Ebony Graphite Pencils

The Super Soft Dark Graphite pencil is 3.8mm in diameter and glides over any drawing surface. Create a wide array of subtle gray tones simply by varying hand pressure. Made with precision European craftsmanship, the deep-toned graphite lead is bonded to the wood for durability, and the casing is made of California Cedar, which is considered the best for precision sharpening. Cat.#87262 List: \$10.95

**Jerry's Price: \$8.79**



## Color Blocking & Base Layers

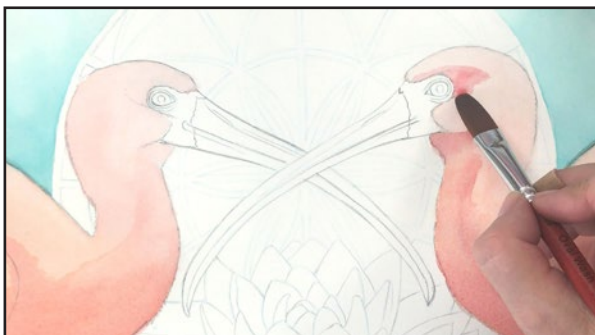
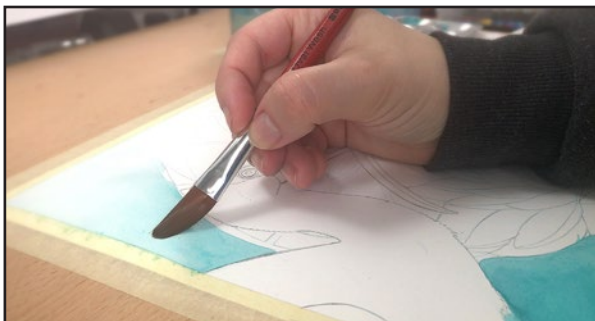
I'm going to establish my base tones and block in large areas of color using watercolor.

This medium is ideal for this stage because I can build up my tones in layers and create subtle nuances in the color.

By using the 1/2 inch oval wash brush I'm able to work quickly and precisely to block in the areas.

This stage requires the most planning in terms of thinking ahead on how you want to execute your piece.

Because I know that I'm using colored pencil to create the detail and definition, this stage is all about making sure the general areas of tone are what I want them to be. It's also the point where I eliminate any unwanted whiteness of the paper from showing through. This will allow me to apply fewer layers of colored pencil to achieve a finished result, so I can focus on creating detail.



## SoHo Watercolor Sets

High quality watercolors made from finely milled pigments and the finest gum arabic. 24 vibrant colors serve as the ideal travel set. Each tube is 7ml, and are highly lightfast with superior tinting. This set offers both quality and value to beginner or professional artists. Cat.#86259 List: \$99.95

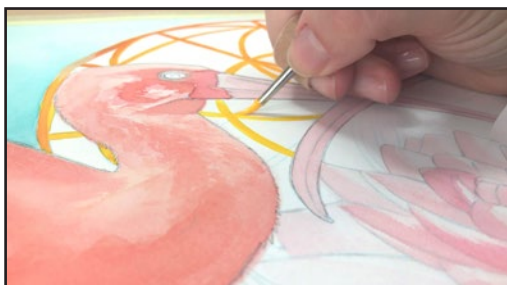
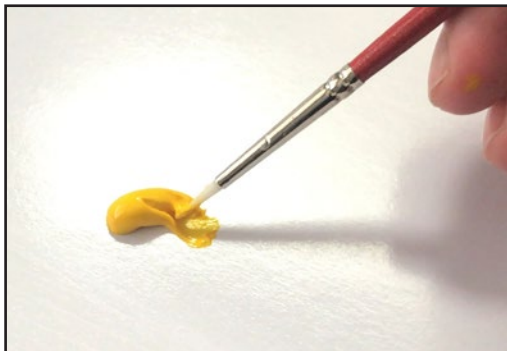
**Jerry's Price: \$49.99**

## Acrylic Touch

For the geometric element in my drawing, I'm using the Value Set of acrylic paints.

Acrylic paint works great when watered down to the consistency of ink, while remaining relatively opaque. This is also ideal for covering any areas my watercolor may have gone where I didn't want it, while providing a solid color, with fewer layers required to achieve it. Also, acrylic paint does not reactivate when completely dry. If I needed to go over some areas again with watercolor, near the areas with acrylic paint, I don't have to worry about the two colors potentially mixing together in an unwanted way.

Another bonus is, on thin layers you can still use colored pencil over the top for broad outlines and strokes.



## SoHo Acrylic Sets

Acrylic sets offer a large range of colors and sizes that provides excellent coverage, super saturated pigments, and dries to a lustrous finish. Available in sets of 5, or in complete painting sets that include everything you need for that perfect gift. Cat.#86458  
List: \$21.95 (set of 5) - \$149.95 (complete set)

**Jerry's Price: \$13.29 (set of 5)  
- \$119.99 (complete set)**



## SoHo Artist Brushes

Select watercolor, acrylic, or oil quality brushes in an assorted set of 5 (or sold separately). This brush line includes; Teijin fiber, golden taklon, as well as power-cryl, white synthetic filament brushes, and premium white hog bristle. A wide variety of styles and sizes to outfit any painter's basic brush needs.  
Cat.#88850 List: \$33.00 each

**Jerry's Price: \$11.99 each**



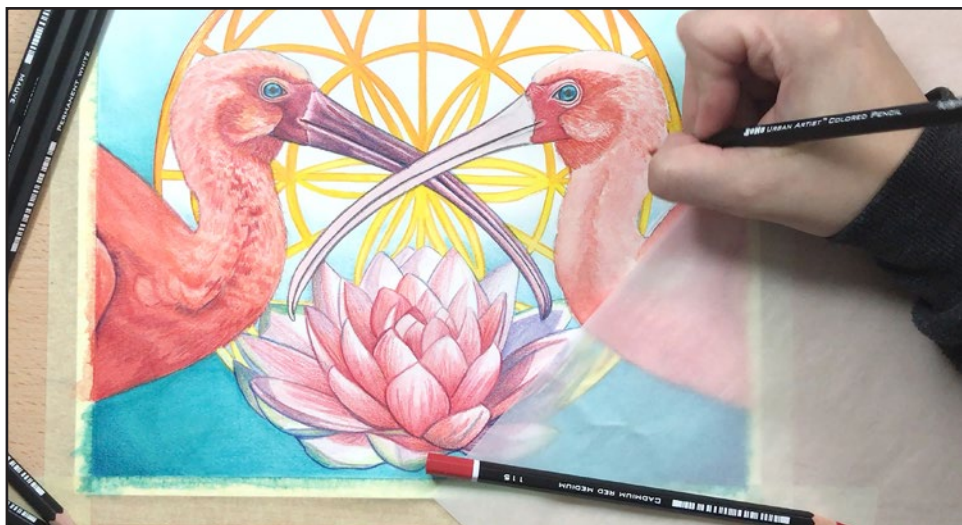
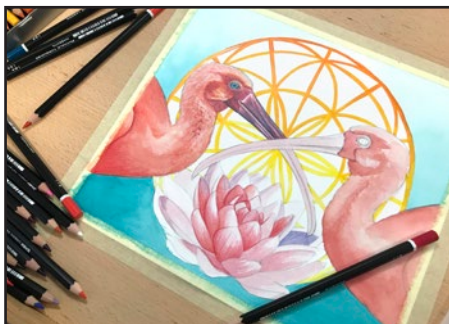
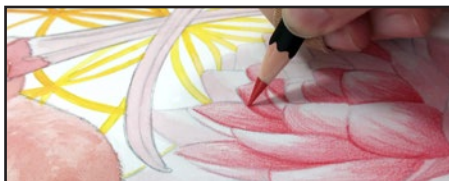


## Details and Refinement

In the colored pencil stage of my process, I'm focusing on refining the color in areas and adding in detail. This is where the piece really starts to come to life.

Working in small sections, I can render areas of the feathers in the birds quite quickly because of the tonal groundwork the watercolor has already been established.

The SoHo Urban Artist colored pencils perform great in this mixed media scenario, sharpening to a point easily, and maintaining sharpness while working. The smooth application and high pigmentation are welcomed attributes of this colored pencil since vibrant color is an essential element in my work.



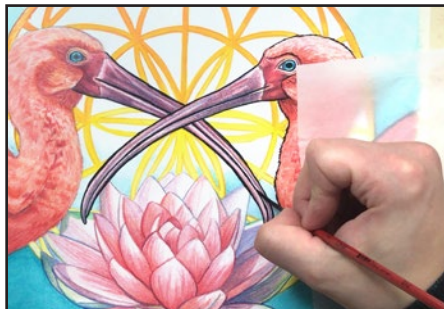
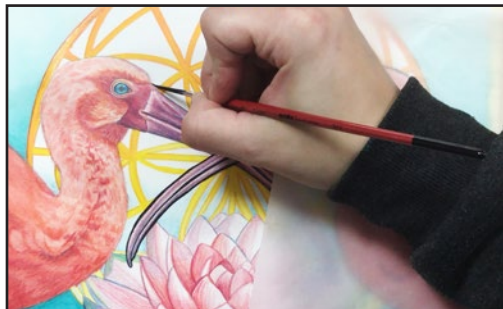
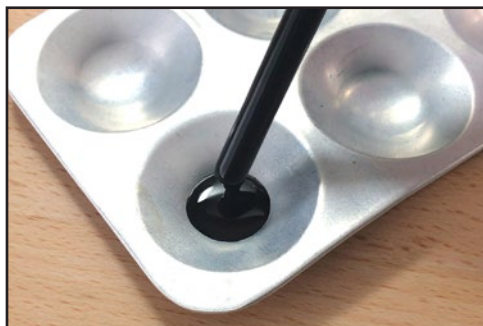
## SoHo Artist Colored Pencil Sets

An elite brand of colored pencils with less wax and more pigment for vibrant colors in every shade in the 72-color line. With superior light resistance for brilliant and lasting works of art. The 3.8mm leads are secured to hexagonal basswood casing for easy sharpening without breakage. Comes in 12, 24, 36, 72 and open stock. Cat.#V04273 List: \$2.50 - \$170.75

**Jerry's Price: \$1.79 - \$62.99**

## Inking

The last step in my process is adding in some bold graphic lines using permanent India Ink. Using a liner brush, I applied it using single motion strokes for the beaks, and shorter strokes for the areas around heads and necks of the birds. Adding this element immediately gives the piece a more illustrative quality, while also testing the boundary of realism with the watercolor and colored pencil applications.



## SoHo Artist India Ink

Fast-drying India ink for drawing, Sumi-E, calligraphy, and more. This deep black ink is perfect for detailed works and gestural strokes. While wet, it cleans up with just soap and water. Great for tonal under-paintings or thin for use in airbrush and fountain pens and to create beautiful shades of grey. Dries to a rich, permanent finish. Cat.#87115 List \$5.50 - \$23.95

**Jerry's Price: \$3.49 - \$14.29**



## SoHo Disposable Studio Wipes

Clean up varnish, oil-based, and acrylic paints with these non-toxic and biodegradable wipes. They are Pre-moistened and contains no harsh solvents or turpentine, so it is safe to use on your hands, brushes, floors, and more. Use on almost any surface including glass, woodwork, and old finishes. Just throw away in your trash bin! Cat.#87123 List: \$8.95 (40ct)

**Jerry's Price: \$4.99**



## Finish and Clean Up

Once I'm happy with the level of detail in all areas of my piece, I can remove the low-tack artists' tape from the edges of my paper by pulling it in a slow and controlled motion, away from the edge of the paper. With my drawing completed, clean up is a breeze using the disposable and biodegradable wipes for my brushes, palette, hands, and any spills.



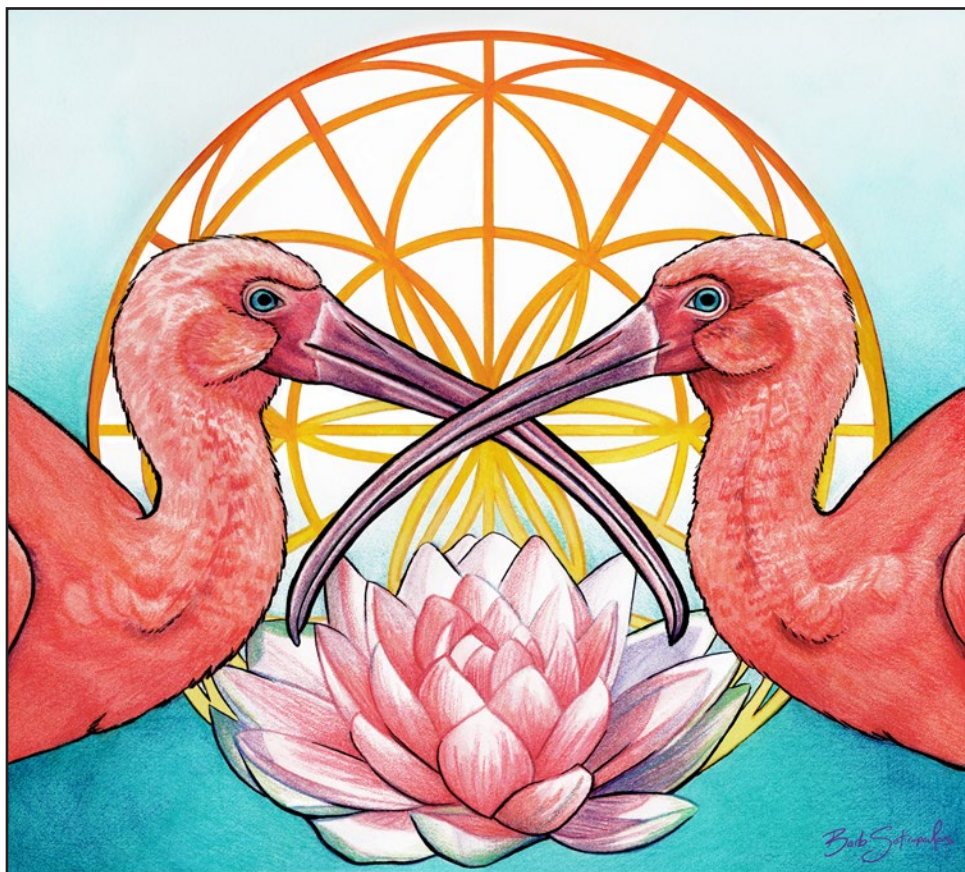
Experimenting with mixed media applications is a fun and challenging way of creating artwork. There's virtually no limit to what you can achieve by using a little imagination and a willingness to think outside of the box. If you're new to the concept and want to try your own project, the SoHo Urban Artists line has a great range of products to get you started and keep you creating!



## SoHo Boat Bags

Deluxe carry-all bags made from superior, heavy-weight cotton canvas, with impeccable stitching and edge piping for strength. Can be carried by hand or over the shoulder with metal feet to protect the bottom of the bag. Includes 1 exterior and 2 zippered interior pockets. Cat.#87224 List: \$80 (Med. 20x6x13.5") - \$90 (Lg. 20x10x16")

**Jerry's Price: \$43.99 - \$46.99**



## ***“Flower of Life”***

Watch this demo in action on my YouTube channel, BarbSotiArt at:

<http://bit.ly/sohodemo2018>



*Barb  
Sotiropoulos*

Colored Pencil & Mixed Media  
Art • Reviews • Tips • Tutorials



***BarbSotiArt.com***

## More SoHo products that make great gifts!



### SoHo Colored Pencil Easels

Your valuable pencil selection stays organized and protected in these easels. Folds flat for travel, then converts to a stand-up holder for studio or field drawing. Made of black waterproof nylon with sturdy Velcro closure and wrist carrying straps. Available in cases that hold 24, 72, and 120 pencils. Cat.#54609 List: \$21.95 - \$39.95

**Jerry's Price: \$12.99 - \$26.99**



### SoHo Table and Chair Set

This table is built rock solid with a steel base and wide-foot levelers, to insure an even surface. Includes a pull out side table for extra work space, storage shelf underneath, two drawers, a pencil shelf, and supply tray, featuring a hinged pencil cup. Cat.#87344 List: \$21.95 - \$395.00

**Jerry's Price: \$229.99**



### SoHo Disposable Palette Pads

This Paper Palette is 2x's thicker than any other brand. Featuring 100 gram coated sheets that can hold lots of paint, won't bleed through to the next sheet, and are beefy enough to take the occasional nick from a palette knife. Available in 3 sizes, with or without a finger hole. Cat.#86112 List: \$5.95 - \$11.99

**Jerry's Price: \$3.99 - \$9.99**



### SoHo Soft Pastel Squares

Firmer than the half sticks, but just as richly pigmented and vibrant. Perfect for sketching. Each stick measures 0.4x0.4x2.56" and comes in a 48 piece set, housed in a sturdy cardboard box with plastic inserts to keep pastels safe. Cat.#87021 List: \$29.50

**Jerry's Price: \$17.69**



COLORED<sup>®</sup>  
PENCIL magazine

# Monthly Art Challenge

EXCLUSIVELY SPONSORED BY

**JERRY'S ARTARAMA<sup>®</sup>**



*\$300 in Prizes in 3 Categories every month!*

**ENTER TODAY**

[www.coloredpencilmag.com/challenge](http://www.coloredpencilmag.com/challenge)



**GET ALL THE ART SUPPLIES SEEN HERE AND MORE AT:**

***[www.jerrysartarama.com](http://www.jerrysartarama.com)***

- 2018 -